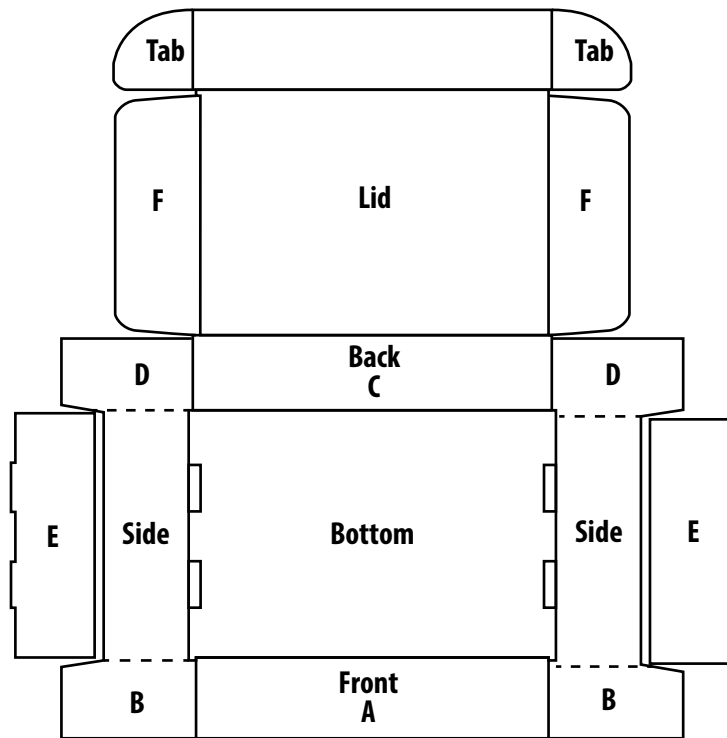


How to Fold Deluxe Literature Mailers

www.interplas.com/white-literature-mailers

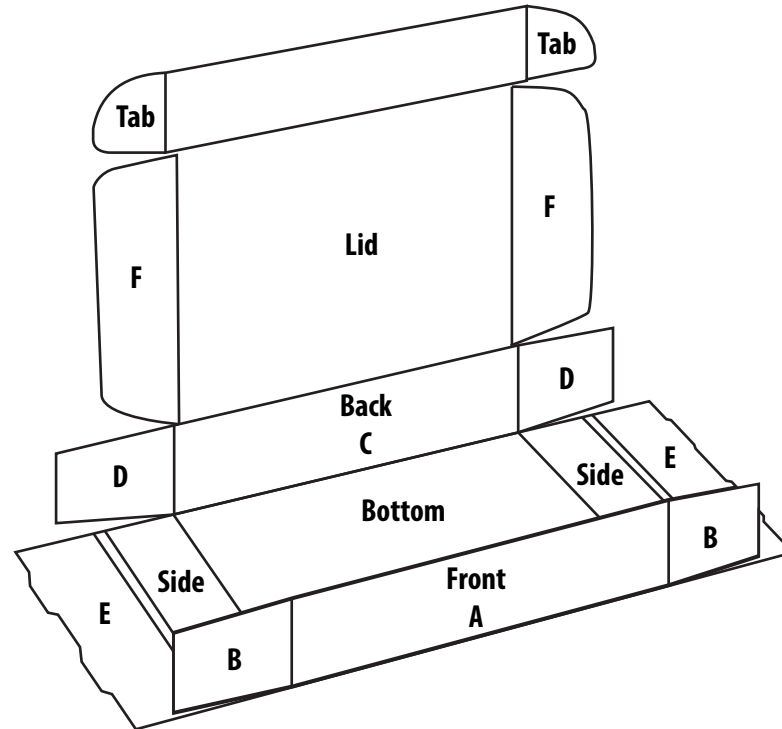
Step 1

Lay the box out flat on a level surface and separate any appropriate perforations.



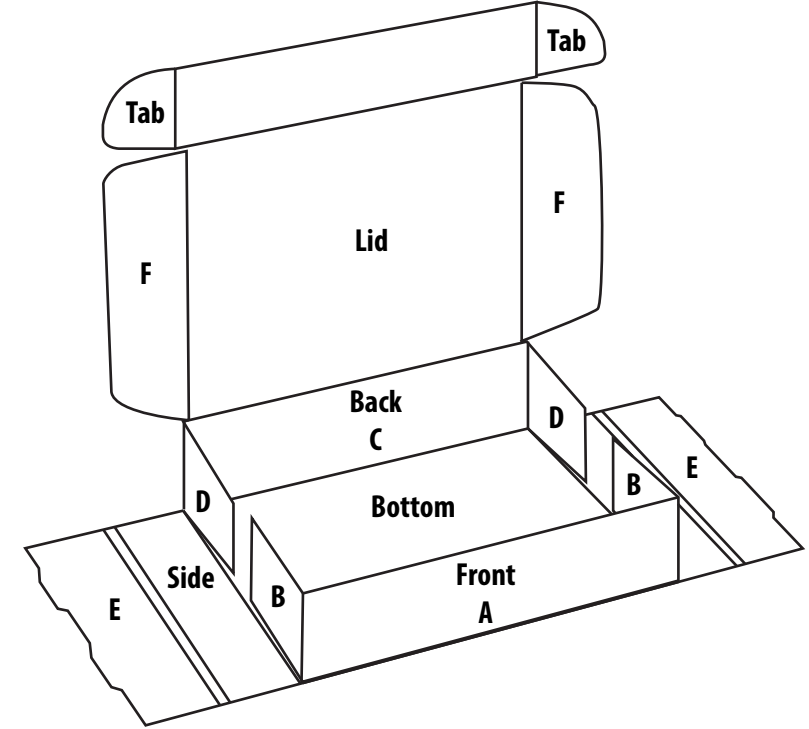
Step 2

Fold panels A and C straight up so they are perpendicular to the bottom.



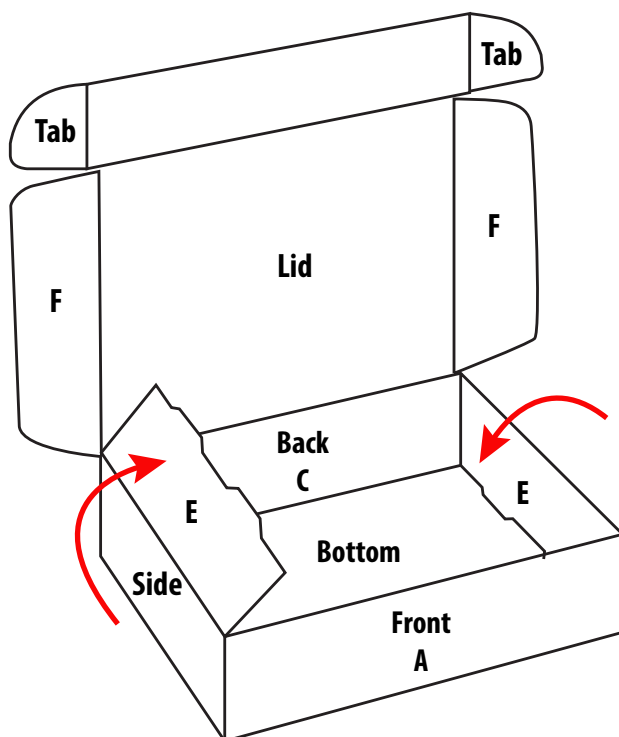
Step 3

Fold panels B and D inward.



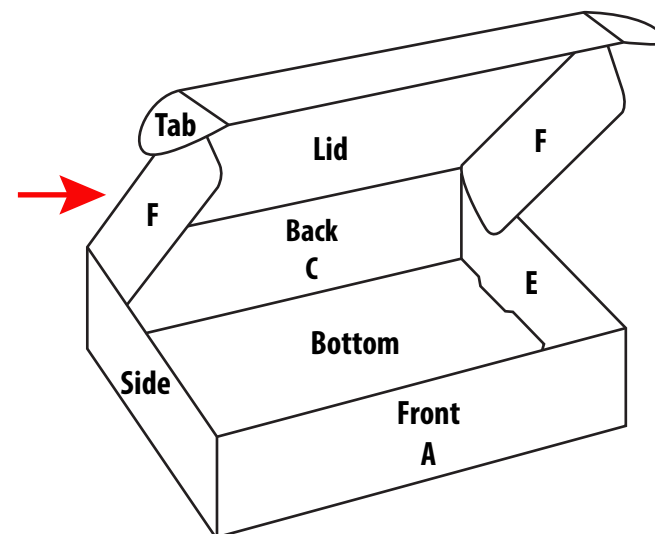
Step 4

Fold the ends E up and roll over flaps B and D so they lock into the bottom.



Step 5

Fold flaps F inward so they tuck inside of the mailer upon closing.



Step 6

Fold the front lock tabs inward, sliding them into the slots in the front of the mailer to secure the lid.

